



王麗楠 Linan WANG

今井龍満 Ryuma IMAI

四方謙一 Kenichi SHIKATA

黒 K o k u b y a k u 白

Period : January 14th ~ January 21st, 2023 *closed on Jan. 17th

Time : 13:00-19:00 *till 18:00 on the last day

Exhibiting Artists : Linan WANG (lacquer), Ryuma IMAI (painting), Kenichi SHIKATA (sculpture, relief)

Venue : H-art Beat Gallery | 2-38-10 Tako Bldg. 2F Kanda-Jimbocho, Chiyoda-ku, Tokyo 101-0051 Japan

H-art Beat Gallery is pleased to announce to hold the group show titled "Kokubyaku" (Black & White).

"Kokubyaku" (Black and White).

Black and White, and the unlimited colors between black and white are existing as well. The artwork which is created and painted by black and white, it might be the most imaginative and creative acts for the artist to be needed to create them up, also for the viewer to evoke his/her imagination the most.

By curating the artworks of the three established contemporary artists who have various creative styles with using different techniques and materials, I would like you to come to see these differences and similarities on their artworks from the their different styles, also in particular, about the boiling points which the human beings can feel the pleasure through each visual perception.

Again I really hope to come to see and feel the new and recent artworks by three artists in your own eyes with taking care of Covid-19 very much.

H-art Beat Gallery / Director : Masaru Nishiyama 西山勝

H-art Beat Gallery

2-38-20 Tako Bldg. 2F Kanda-Jimbocho, Chiyoda-ku, Tokyo 101-0051 Japan | 101-0051 東京都千代田区神田神保町2-38-10 多幸ビル2F

Tel. & Fax. : 81-3-6256-8986, 81-90-5310-4872 e-mail : masaru_nishiyama@hartbeat.co.jp URL: <http://hartbeat.co.jp>

Artist CVs:

Linan WANG | 王麗楠

1993 Born in Hebei Province, China

2016 Graduated from Hubei Institute of Fine Arts

2020 Graduated from Master Course in Kanazawa College of Art

Solo Exhibition : Gallery K (Tokyo), Gallery NATSUKA (Tokyo) and many

Award : KANABI Creative Award 2020, President's Award

Ryuma IMAI | 今井龍満

1976 Born in Tokyo

1995 Learned at Académie de la Grande Chaumière, Paris

Learned art as assistant in Toshimitsu IMAI (Father) Atelier

Solo Exhibition : Art Gallery in Matsuzakaya Department Store (Nagoya) , H-art Beat Gallery (Tokyo) and many

Collection : Menard Art Museum (Aichi), Noku Kyoto Hotel (Kyoto) , Nakano Residential Museum (Niigata),

The Royal Garden – J'S BAR BISTRO (Hong Kong) and many

Kenichi SHIKATA | 四方謙一

1983 Born in Kyoto

2007 Graduated from Art and Architecture School of Waseda University

2015 GALLERY IRIYA and many

Solo Exhibition : MITSUBA SPACE (Tokyo)、Seibu Shibuya (Tokyo)、THE GALLERY (Tokyo)

Collection : Osaka International Airport (Osaka), Kansai International Airport (Osaka),

THE FINE TOWER UMEDA (Osaka), RAYAD MIYASHITA PARK (Tokyo) and many

Exhibiting artworks (selected) :

Linan WANG



Rhythmic movement 2021.2 / Lacquer, cloth, coating powder / h67×w35×d25cm / 2021



Multiplication 2022.2 / Lacquer, cloth, coating powder / h63×w35×d35cm / 2022

Ryuma IMAI

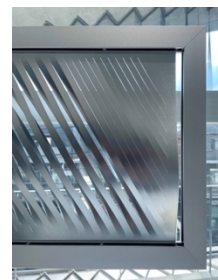


Rabbit/ Enamel, Japanese paper on panel / h53×w41×d3cm / 2023

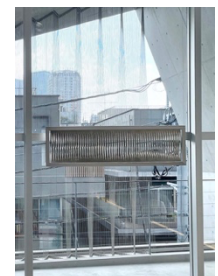


Gorilla/ Masking medium and acrylic on canvas / h72.7×w53×d3cm / 2022

Kenichi SHIKATA



105 of sixty degree in the frame_#001 / Stainless steel, aluminum, rubber / h35.5×w124.5×d6cm / 2021



115 vertical lines in the frame_#001 / Stainless steel, aluminum, rubber / h35.5×w124.5×d6cm / 2021

*If there are anything you need further information, please feel free to contact me (masaru_nishiyama@hartbeat.co.jp).